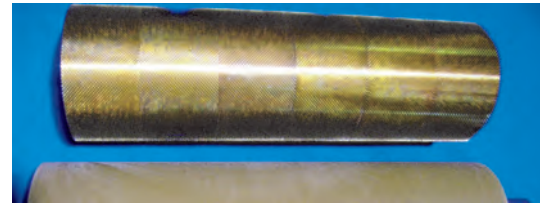


## COLD PERFORATION—A WIDE ARRAY OF DESIGN POSSIBILITIES

Cold perforators can be designed in many ways to suit your application.

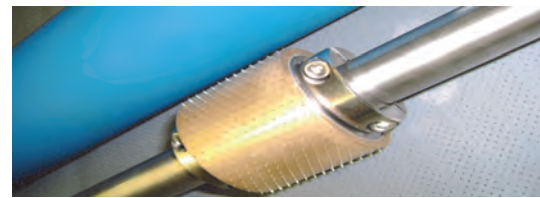
### CROSS WEB COLD PERFORATION—PINNED SLEEVES

This style of setup allows for the pinned roller to be completely covered in pinned sleeves, or mixed with blank sleeves to create “lanes” of Perforation. These can be held on the shaft by a squeeze system or grub screws



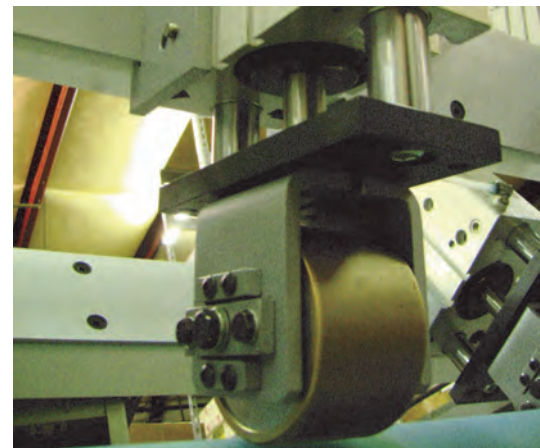
### LANE COLD PERFORATION—SINGLE SLEEVES

This very inexpensive setup allows the user to slide the lane of perforating wherever they wish. Each pinned sleeve is mounted on its own bearings set.



### LANE COLD PERFORATION—PNEUMATIC HEAD

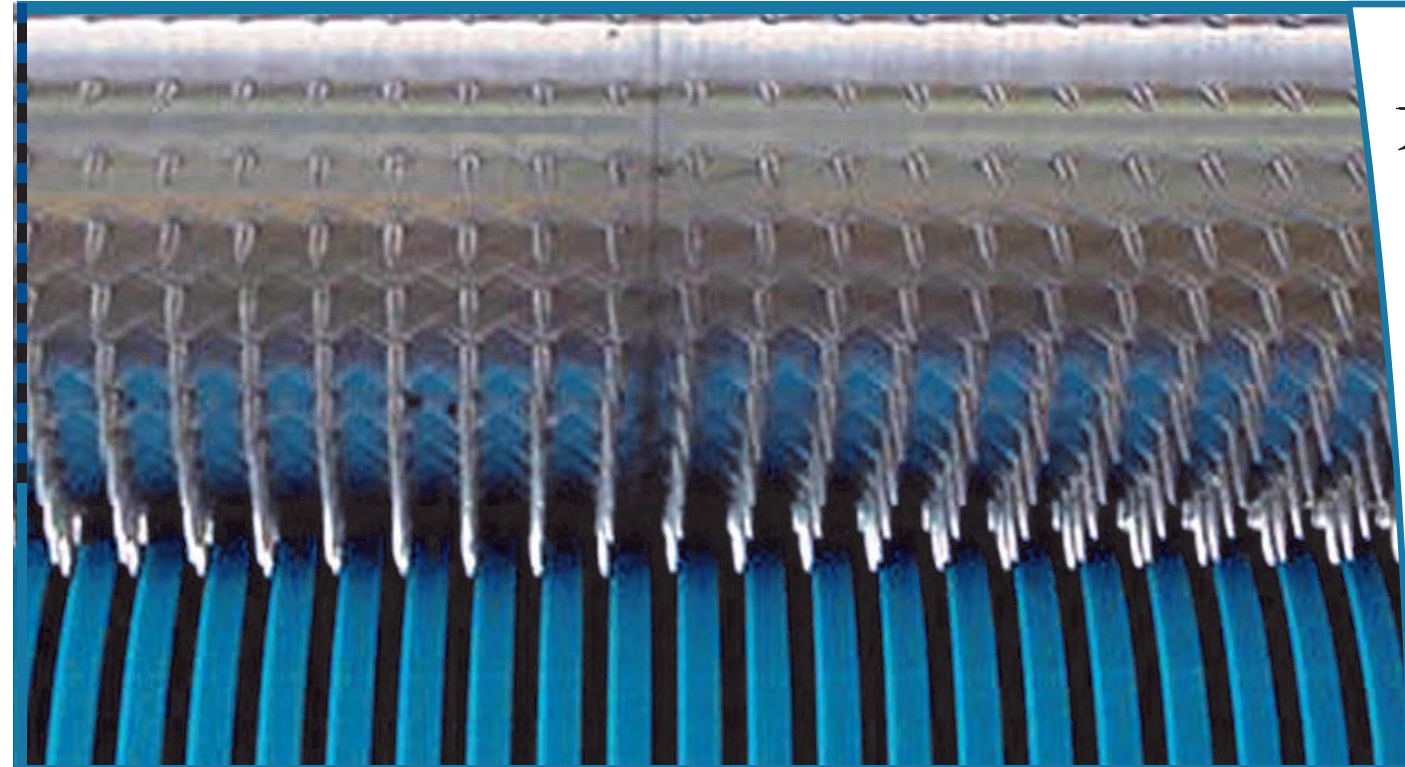
This setup allows the user to slide the lane of perforating wherever they wish. Each pinned sleeve is mounted on its own pneumatic head



If you are interested in adding perforating to your existing equipment, you need a company with a wide range of experience in the field that can offer cost effective solutions to get you there, and get it right the first time.

 **Stewart's of America, Inc.**  
“On the sharp End of Pinpoint Technology”

2825 Kemet Way  
Simpsonville  
South Carolina, 29681  
USA  
Tel: 1-864-967-7085  
Fax: 1-864-967-4361  
Em: [Sales@StewartsofAmerica.com](mailto:Sales@StewartsofAmerica.com)  
WB: [www.StewartsofAmerica.com](http://www.StewartsofAmerica.com)



## COLD NEEDLE PERFORATION MACHINERY

for

Nano-Perforation / Micro-Perforation / Macro-Perforation



Cold Needle Perforating



**Stewart's of America, Inc.**  
“On the sharp End of Pinpoint Technology”



# The Latest in Cold Perforating Technology

PRECISION TOOLING, EFFICIENT EQUIPMENT,  
THE HOLE SOLUTION

## PERF-ECT HOLES!

Our Cold Perforating units have all the key ingredients for accurate perforating with minimum maintenance.

### STANDARD HOT PERFORATOR DIMENSIONS:

#### Machine Dimensions:

- Depth:** 325mm
- Width:** (working width), + 500mm
- Height:** 650mm
- Weight:** 350KG
- Perforating core OD:** 80mm - 140mm
- Diameter over pins:** 110mm - 180mm
- Counter roller OD:** 110mm - 180mm
- Line Speed:** Up to 400mpm std
- Electric Controls:** Optional, Marathon Max
- Optional Control Cabinet Dimensions:**
- Depth:** 200mm
- Length:** 200mm
- Height:** 300mm
- Bolted onto machine frame.**

#### OPTIONS:

- CUSTOM DIMS AVAILABLE IF REQUIRED
- SPECIAL AND FANCY PIN PATTERNS
- FAST SLEEVE CHANGE SYSTEM
- STROBE LIGHT FOR QC CHECK
- SPARE ROLLER STAND

## FLEXIBLE INTEGRATION

The Rotary Cold Perforation System will integrate into just about any existing machinery line:

- Extrusion Lines
- Bonding Lines
- Thermoforming Lines
- Slitter / Re-winders
- Simple Unwinds and Rewinds
- Laminators
- Printing Presses
- Bag/Pouch Making Machines
- Post Gusseting Equipment
- and more.....

## FAST TOOLING CHANGES EXCELLENT REPEATABILITY

- Pinned roller is broken down into Pinned sleeves, this allows the Operator to remove and replace segments as required for tooling changeovers.
- Our pinned sleeve system also allows for simple local damage repair/and replacement .

## SIMPLICITY IS BEAUTIFUL

- Accurate rotary depth measurement indicators with digital read out to make penetration depth changes a snap.
- Cold perforators are generally web driven, however, upgrades to a simple motor drive or speed matching motor are optional.
- Optional speed matching is achieved with a 3HP / 2.25KW AC Vector motor
- Robust, Rigid machine construction, 50mm x 100mm steel framing

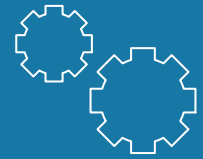
## SAFETY

- Is built with safety in mind. Powder coated perforated panels surround the machine, providing maximum safety for the operator
- Can be engaged electronically or manually, or both for interlocking

## BACK UP "PRESSURE" ROLL CHOICES

Stewarts of America manufacture and supply a wide array of pressure roll options.

- Nylon bristle roller with **ULTRA-TITE** technology
- High temp resistance bristle roller with **ULTRA-TITE** technology
- Rubber / Urethane / Silicone covered rollers



### CUSTOM SOLUTIONS

Stewarts of America have the ability to design and manufacture a custom perforating solution for your specific application. Stewarts of America's engineers are well versed in a wide range of materials and the effects that hot perforation has on these materials. From Non-wovens to Films and Foils, Stewarts of America are your partners for the *Hole Solution*.



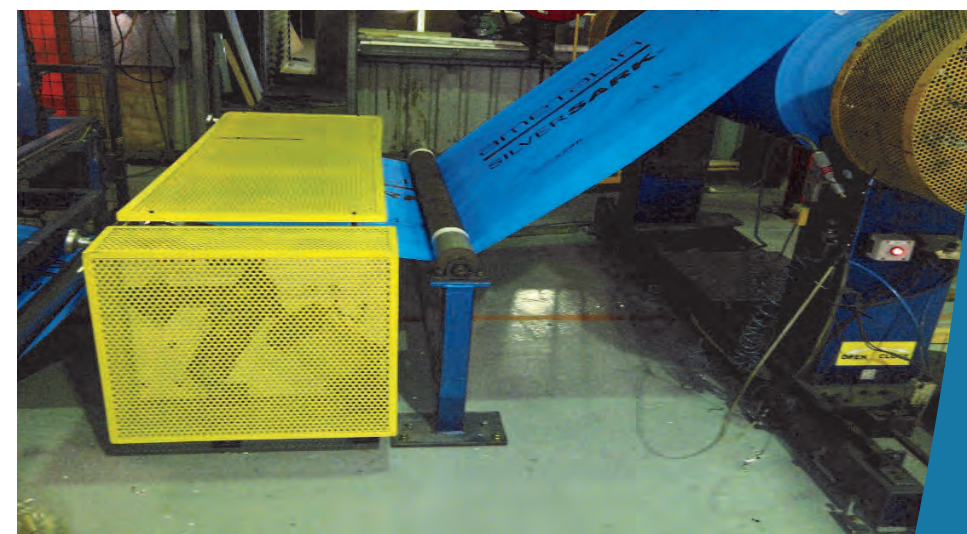
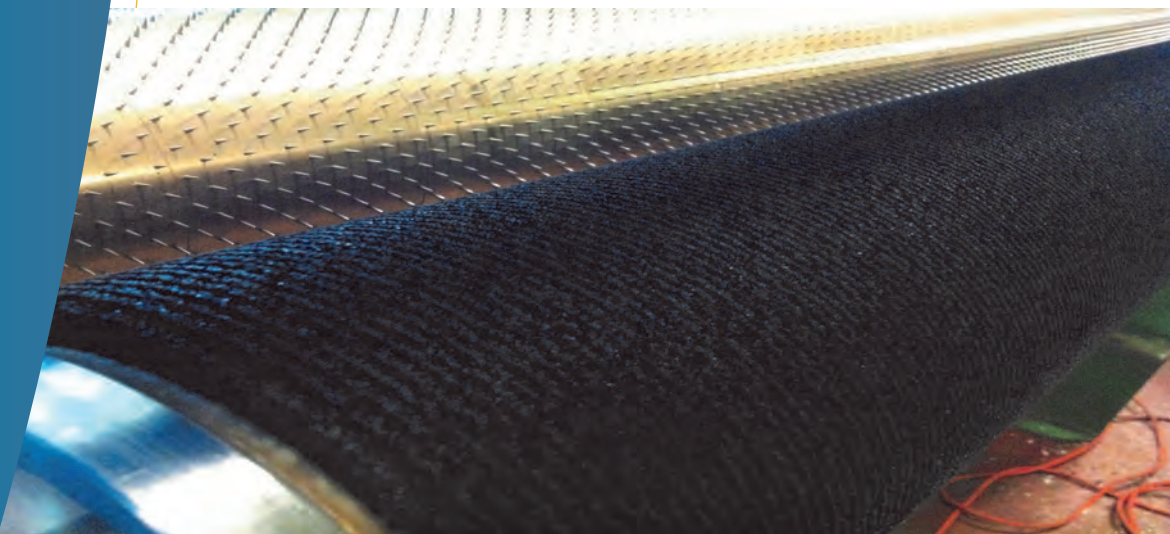
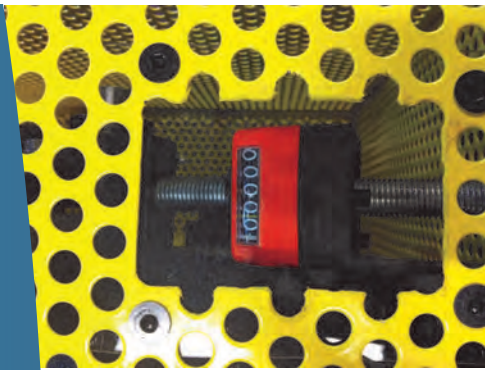
### WEB SOLUTIONS

Visit our comprehensive website for a insight of other innovative Pinned Product solutions Stewarts of America offers the Industry. Signup for our e-newsletter, or download comprehensive brochures at [www.StewartsofAmerica.com](http://www.StewartsofAmerica.com)



### GLOBAL SOLUTIONS

Stewarts of America has agents and offices worldwide. We ship to over 50 countries . Our equipment is designed with the global market in mind, utilizing electronic components that are available internationally, with the support of our Stewarts of America trained knowledgeable local agents.



Flexible Perforating Solutions for your converting needs